

# SIRUBA®

銀爺牌工業用縫紉機

INDUSTRIAL SEWING MACHINE

# 700DFT

## 零件圖 PARTS LIST

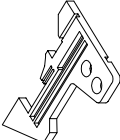
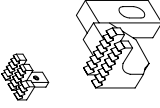
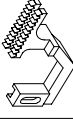



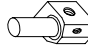






From the library of: Diamond Needle Corp

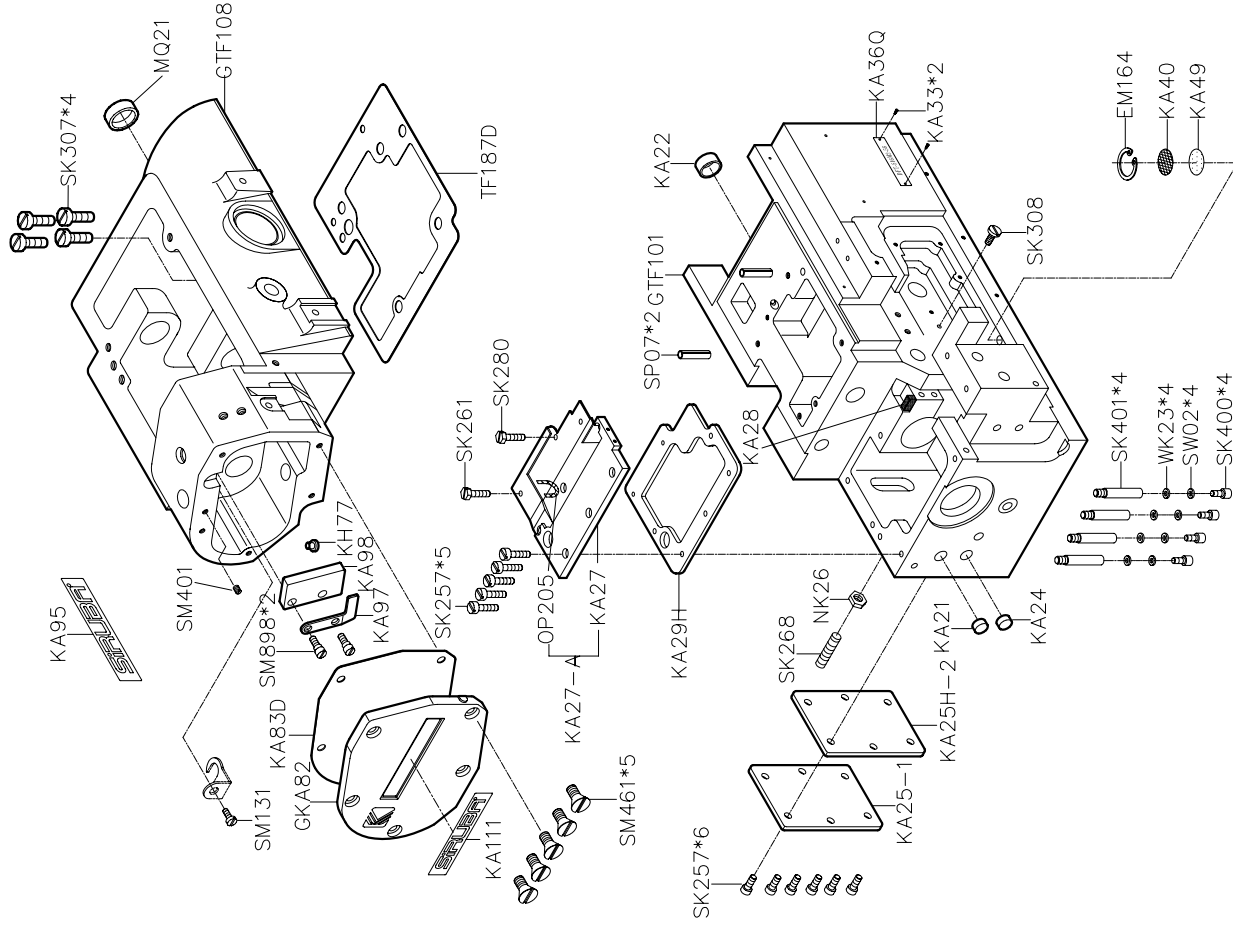
CE



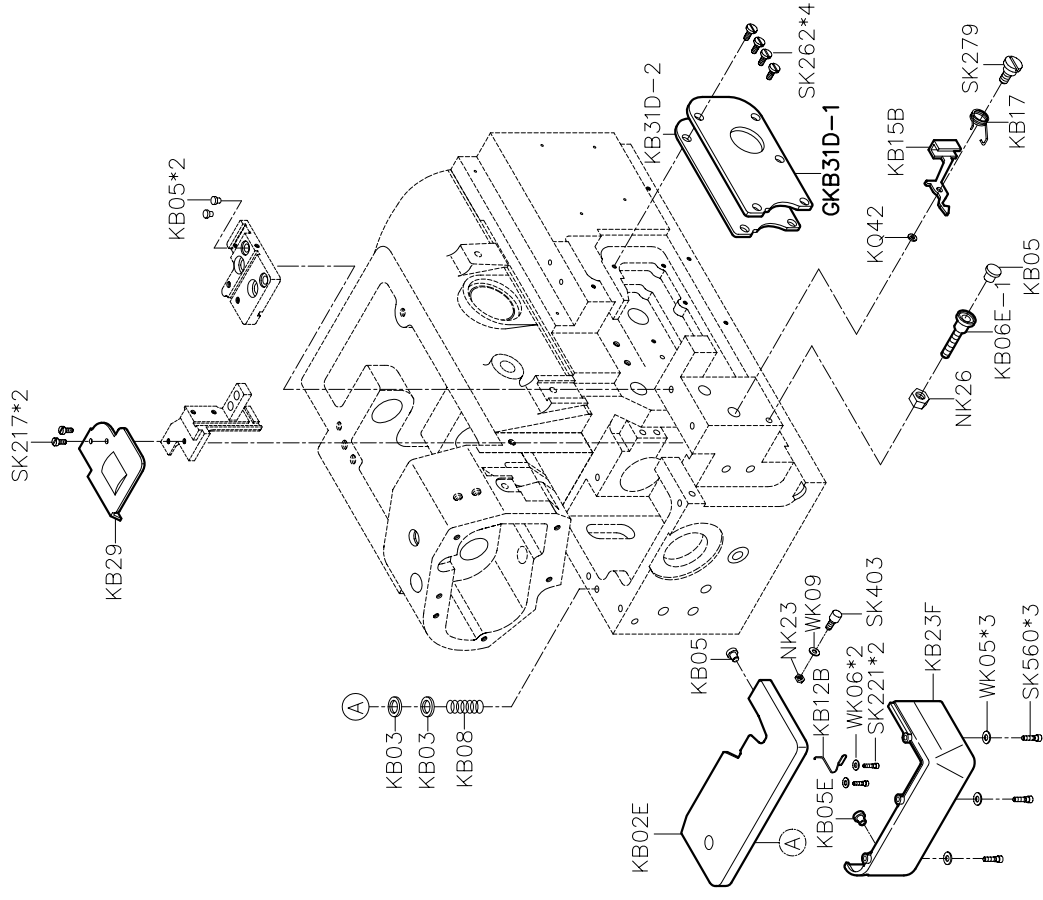
高林股份有限公司  
KAULIN MFG. CO., LTD.

機 型 MODEL	 針板 NEEDLE PLATE	 送具 FEED DOG	 送具 FEED DOG	 送具 FEED DOG	 押具 PRESSER FOOT	 勾 針 LOOPER	 針 留 NEEDLE CLAMP	 束 子 COLLER	 衝 程 CRANK	 衝 程 CRANK	 針 號 NEEDLE	
747DFT-514H4-24	E919	D440	D095	H445	D453	P454-A	LP38	KG142-E	KJ13F	TF157-A	KJ11B	DC27 #9*2
747DFT-514H4-24GB	E919	D440	D095	H445	D453	P454-A	LP38	KG142-E	KJ13F	TF157-A	KJ11B	DC27 #9*2
747DFT-514H4-24GB/P	E919	D440	D095	H445	D453	P454P-A	LP38	KG142-E	KJ13F	TF157-A	KJ11B	DC27 #9*2
747DFT-514H4-24GB/PB	E919	D440	D095	H445	D453	P454-A	LP38	KG142-E	KJ13F	TF157-A	KJ11B	DC27 #9*2
747DFT-514M2-24	E919	D440	D095	H445	D453	P454-A	LP38	KG142-E	KJ13F	TF157-A	KJ11B	DC27 #9*2
747DFT-514M2-24DT	E919C	D440	D095	H445	D453	P454-A	LP38	KG142-E	KJ13F	TF157-A	KJ11B	DC27 #9*2
757DFT-516H4-35	E861	D489	D502	H497	D469	P466-A	LP38	KG153-E	KJ13F	TF157-A	KJ11B	DC27 #14*2
757DFT-516H4-35GB	E861	D489	D502	H497	D469	P466-A	LP38	KG153-E	KJ13F	TF157-A	KJ11B	DC27 #14*2
757DFT-516H4-35GB/P	E861	D489	D502	H497	D469	P466P-A	LP38	KG153-E	KJ13F	TF157-A	KJ11B	DC27 #14*2
757DFT-516H4-35GB/PB	E861	D489	D502	H497	D469	P466-A	LP38	KG153-E	KJ13F	TF157-A	KJ11B	DC27 #14*2
757DFT-516H4-56	E866	D489	D502	H500	D469	P463-A	LP38	KG155-E	KJ13F	TF157-A	KJ11B	DC27 #14*2
757DFT-516H4-56GB	E866	D489	D502	H500	D469	P463-A	LP38	KG155-E	KJ13F	TF157-A	KJ11B	DC27 #14*2
757DFT-516H4-56GB/P	E866	D489	D502	H500	D469	P463P-A	LP38	KG155-E	KJ13F	TF157-A	KJ11B	DC27 #14*2
757DFT-516H4-56GB/PB	E866	D489	D502	H500	D469	P463-A	LP38	KG155-E	KJ13F	TF157-A	KJ11B	DC27 #14*2
757DFT-516M2-35	E861	D489	D502	H497	D469	P466-A	LP38	KG153-E	KJ13F	TF157-A	KJ11B	DC27 #18*2
757DFT-516M2-35DT	E861C	D489	D502	H497	D469	P466-A	LP38	KG153-E	KJ13F	TF157-A	KJ11B	DC27 #18*2
757DFT-516M2-56	E866	D489	D502	H500	D469	P463-A	LP38	KG155-E	KJ13F	TF157-A	KJ11B	DC27 #14*2
757DFT-516M2-56DT	E866C	D489	D502	H500	D469	P463-A	LP38	KG155-E	KJ13F	TF157-A	KJ11B	DC27 #14*2
747DRT-514M2-24	E919	D440	D095	H445	D070	P068-4	LP38	KG142-E	KJ13F	TF157-A	KJ11B	DC27 #9*2
747DRT-514M2-24DT	E919C	D440	D095	H445	D070	P068-4	LP38	KG142-E	KJ13F	TF157-A	KJ11B	DC27 #9*2
757DRT-516M2-56	E129	D066	D067	H500	D064	P056-A	LP38	KG155-E	KJ13F	TF157-A	KJ11B	DC27 #14*2
757DRT-516M2-56DT	E129C	D066	D067	H500	D064	P056-A	LP38	KG155-E	KJ13F	TF157-A	KJ11B	DC27 #14*2
757DRT-516M2-35	E169	D066	D067	H497	D064	P053-A	LP38	KG153-E	KJ13F	TF157-A	KJ11B	DC27 #14*2
757DRT-516M2-35DT	E169C	D066	D067	H497	D064	P053-A	LP38	KG153-E	KJ13F	TF157-A	KJ11B	DC27 #14*2

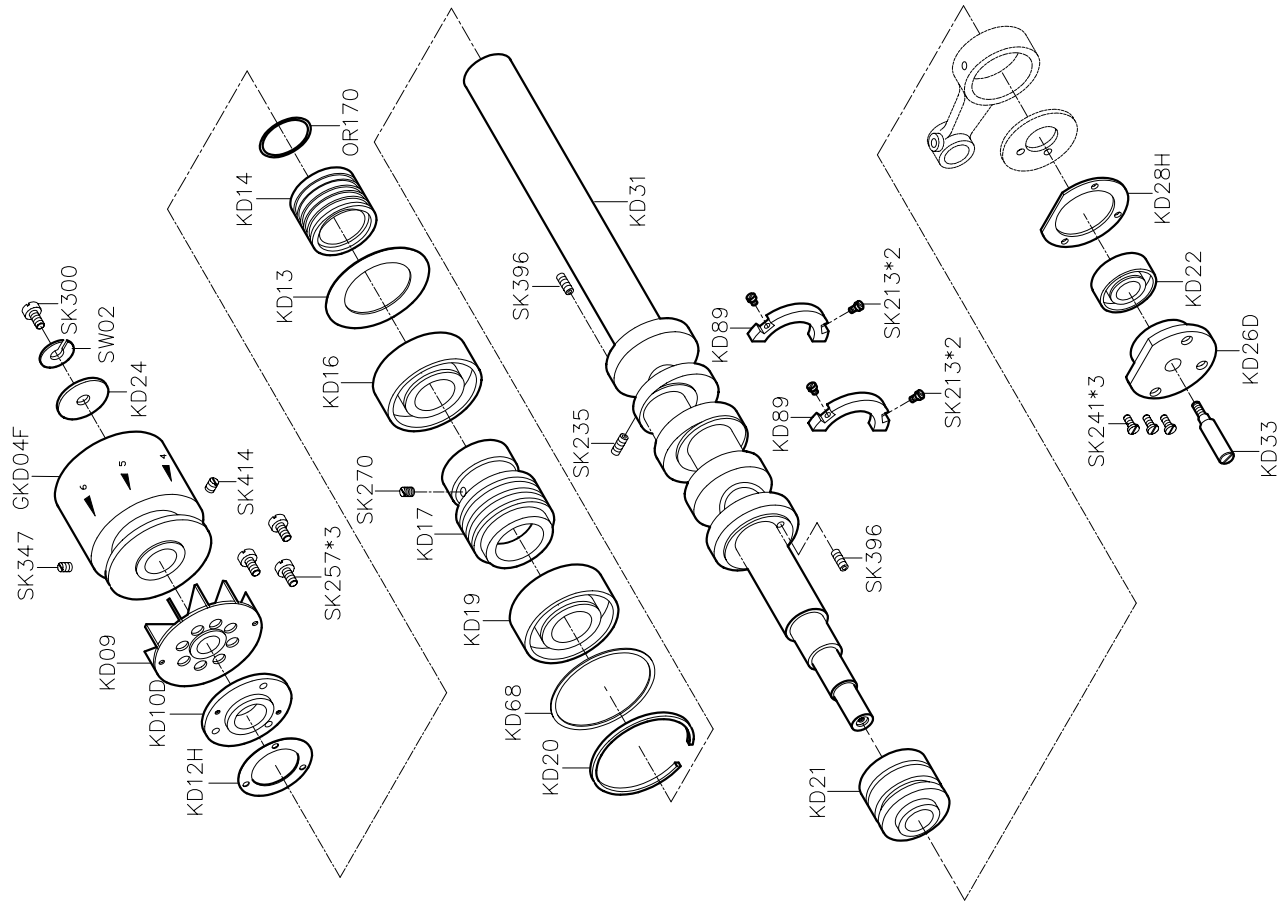
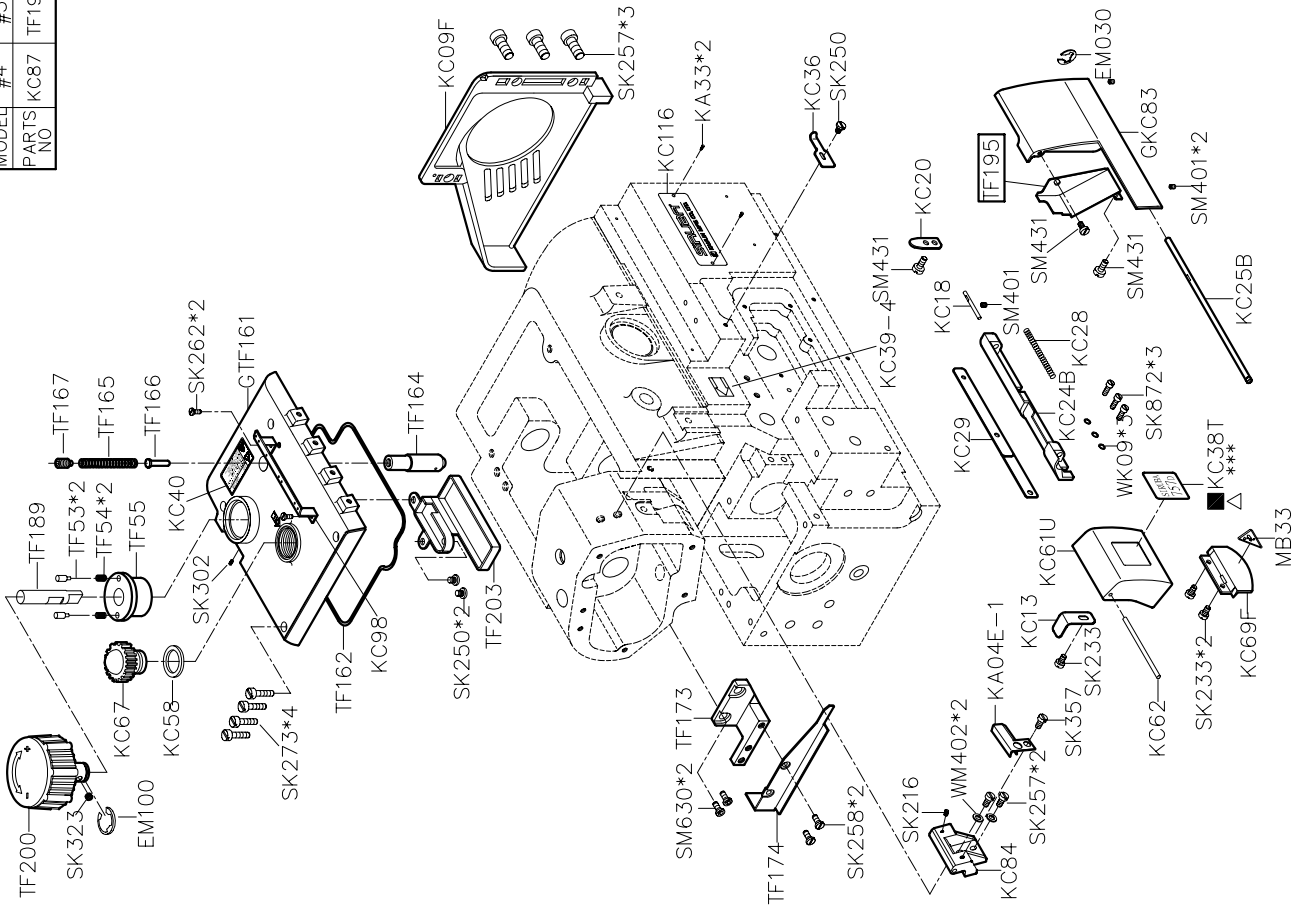
# PARTS LIST FOR KA GROUP



# PARTS LIST FOR KB GROUP

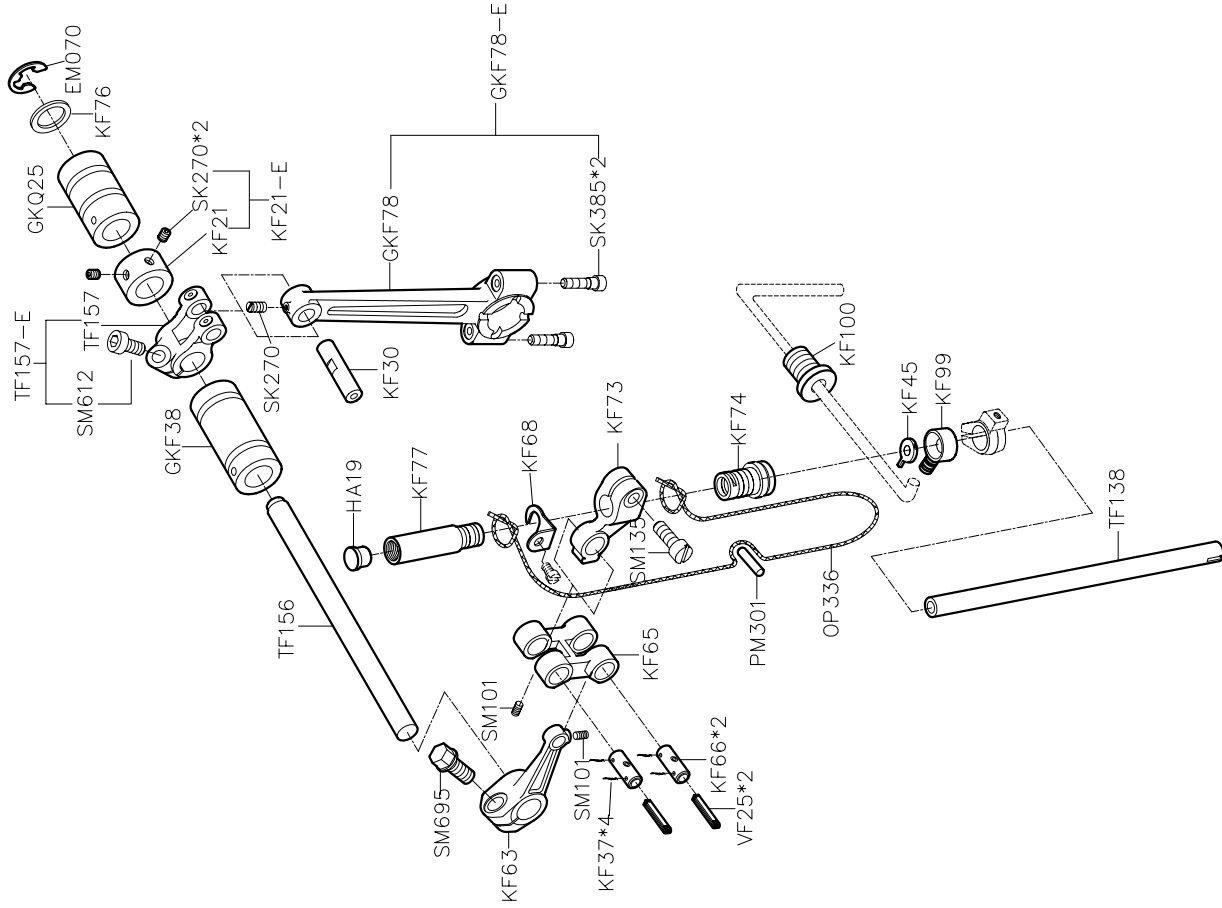


MODEL	#4	#5
PARTS NO.	KC87	TF195



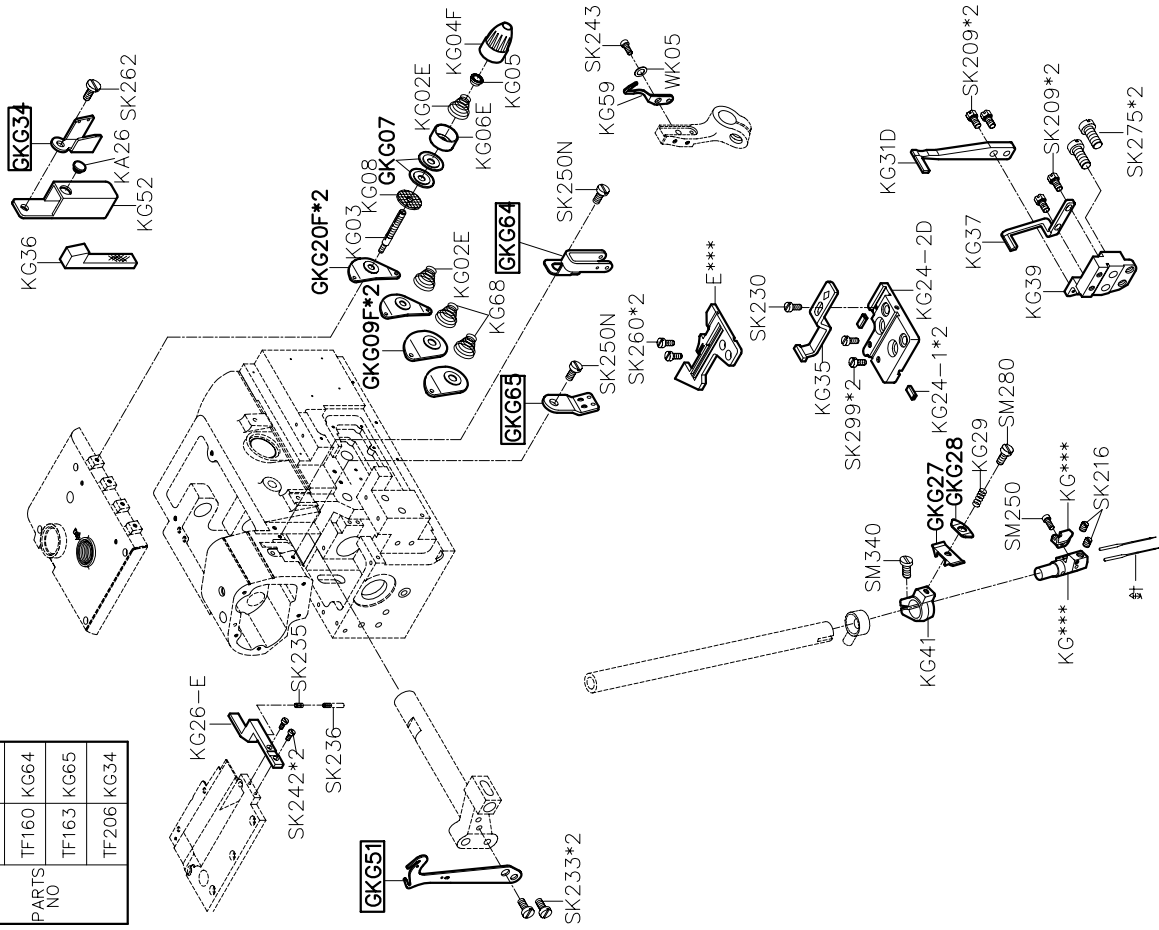
**PARTS LIST FOR KC GROUP** from the library of: Diamond Needle Corp. **PARTS LIST FOR KD GROUP**

# PARTS LIST FOR KF GROUP

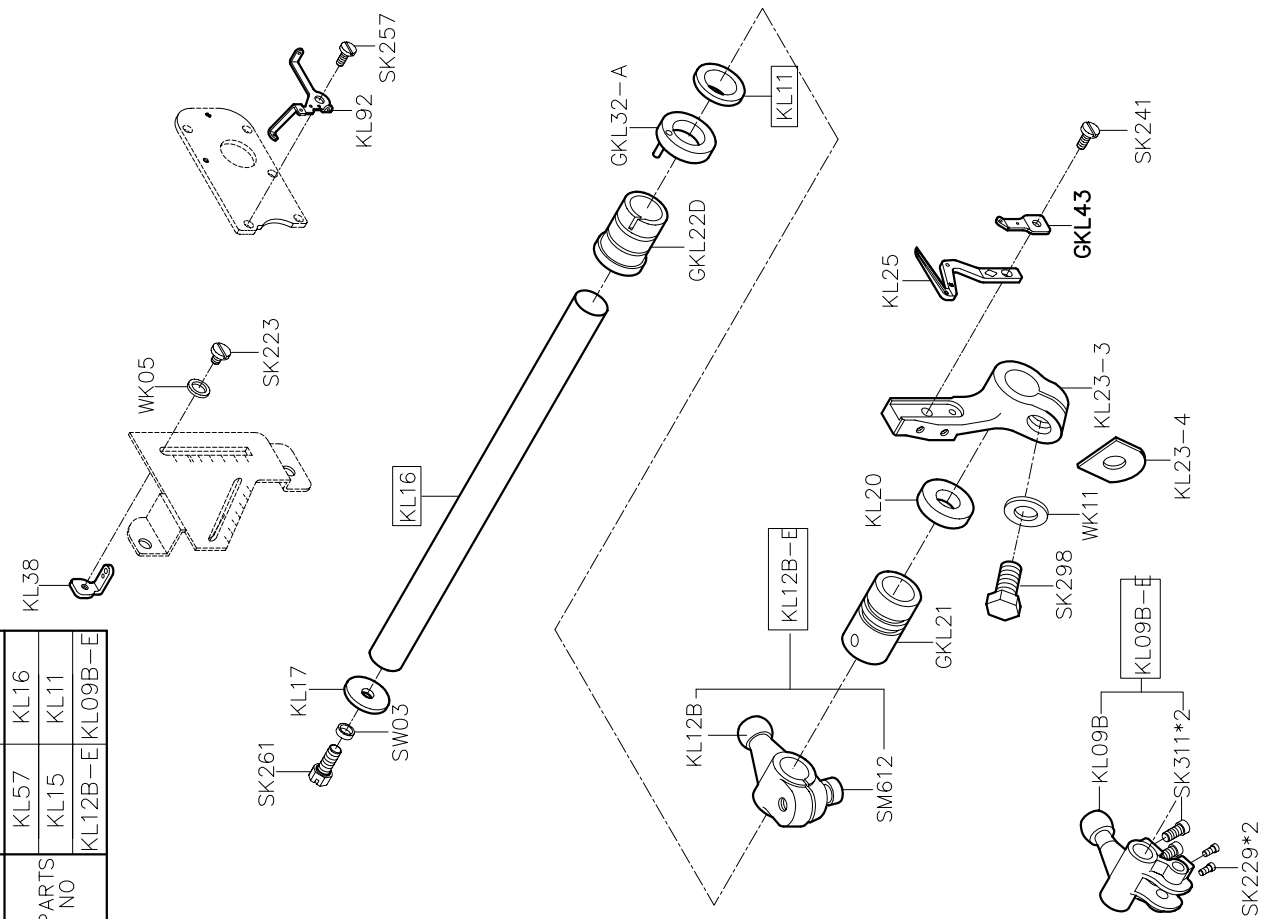
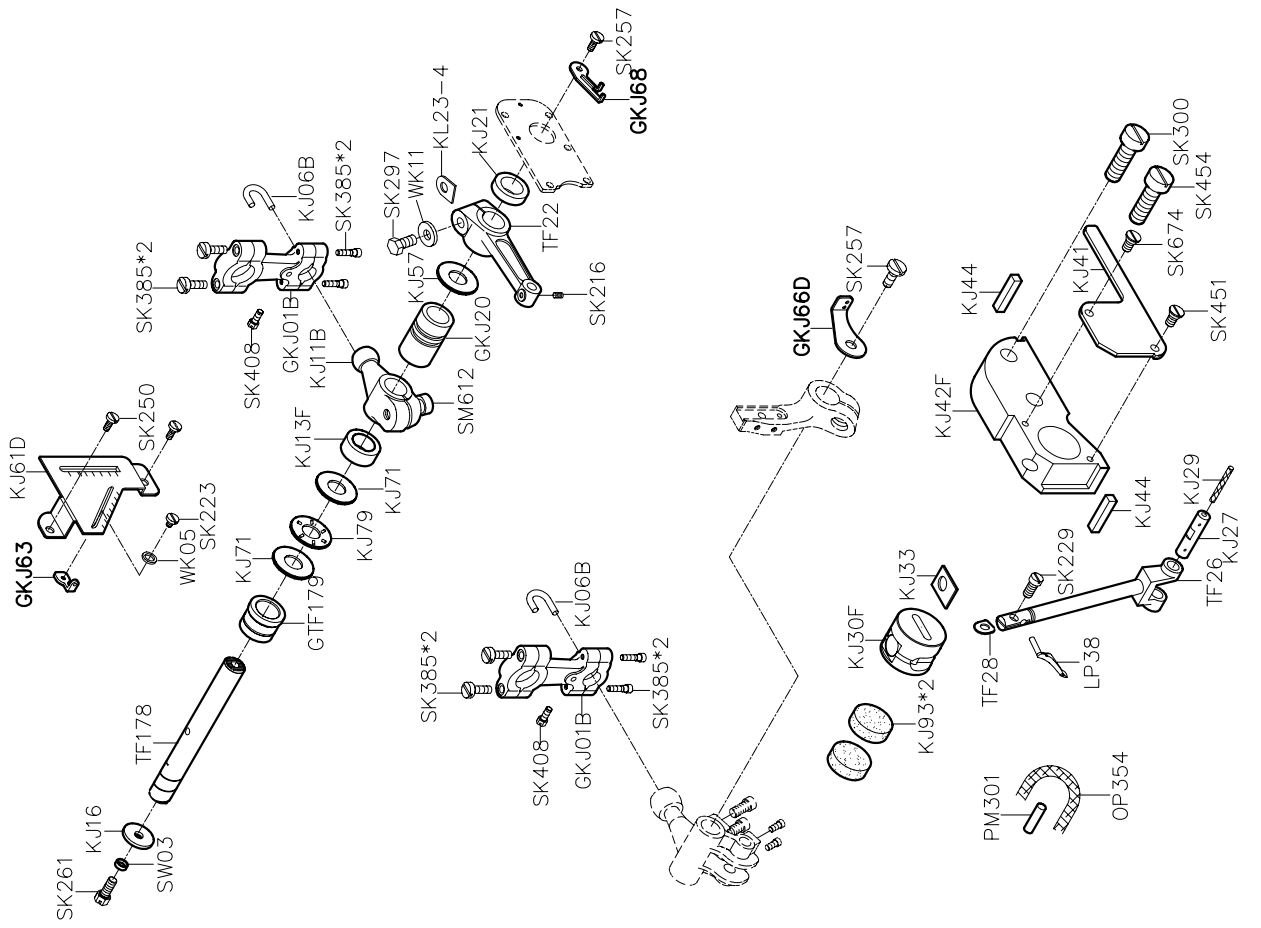


# PARTS LIST FOR KG GROUP

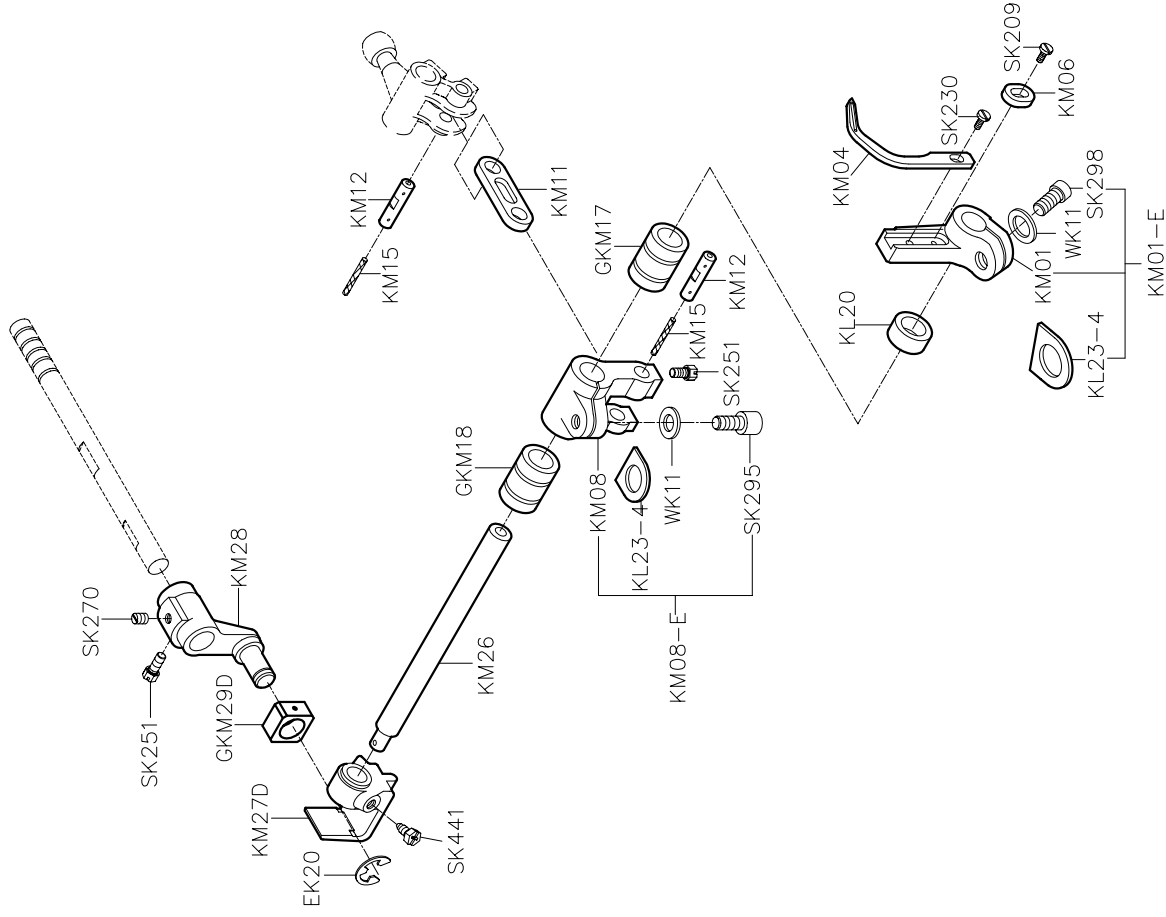
MODEL	#4	#5
	TF205	KG51
PARTS NO	TF160	KG64
	TF163	KG65
	TF206	KG34



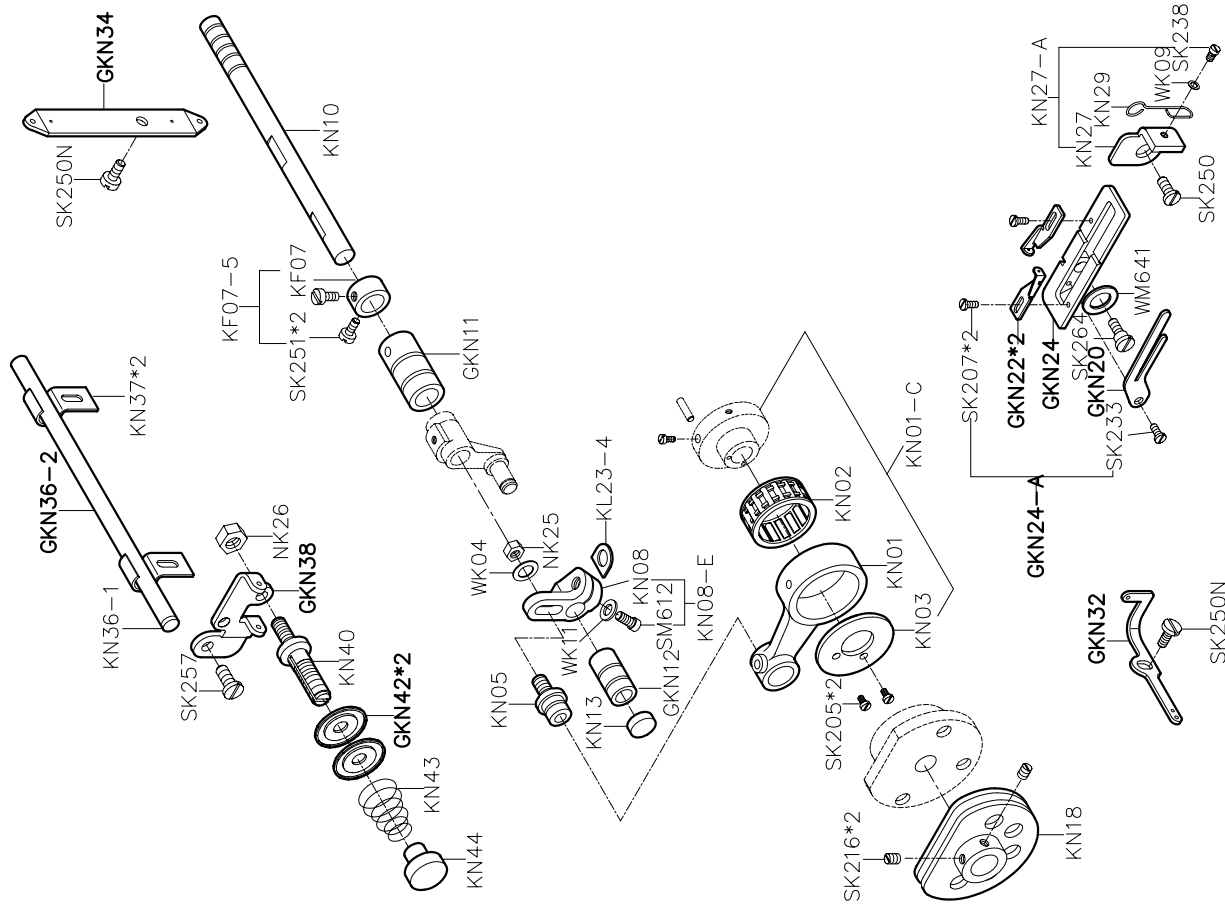
MODEL	#4	#5
PARTS NO	KL57	KL16
	KL15	KL11
	KL12B-E	KL09B-E

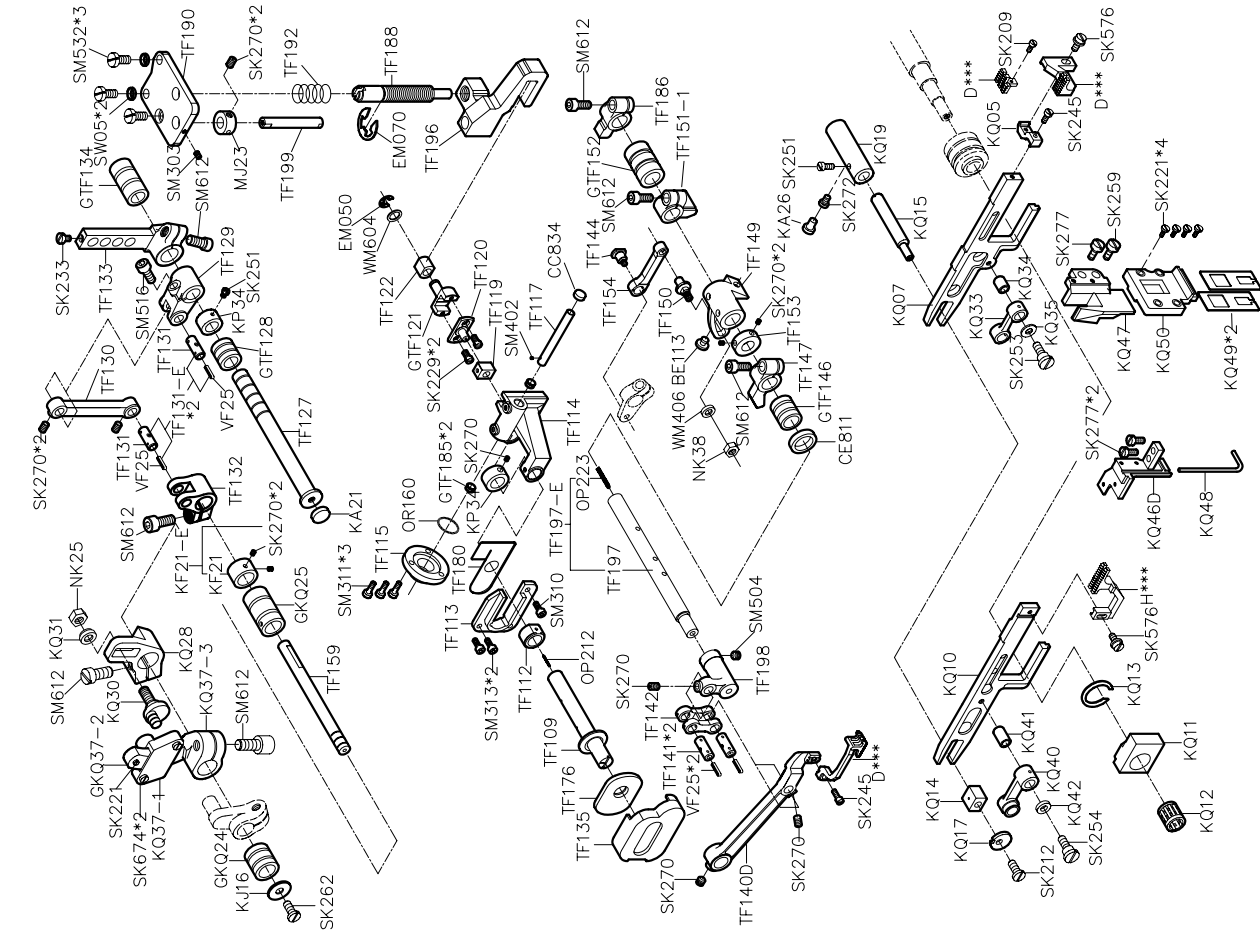
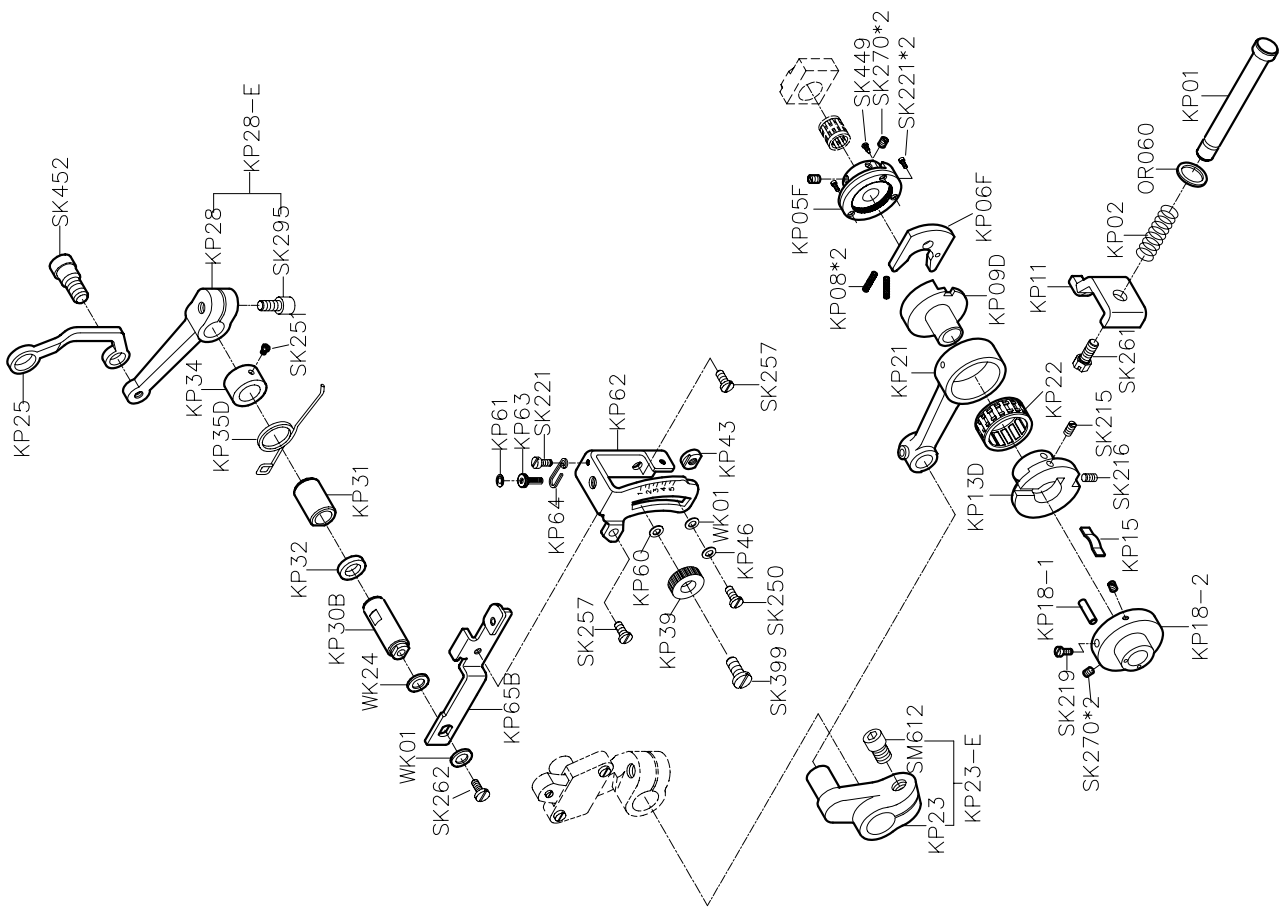


# PARTS LIST FOR KM GROUP



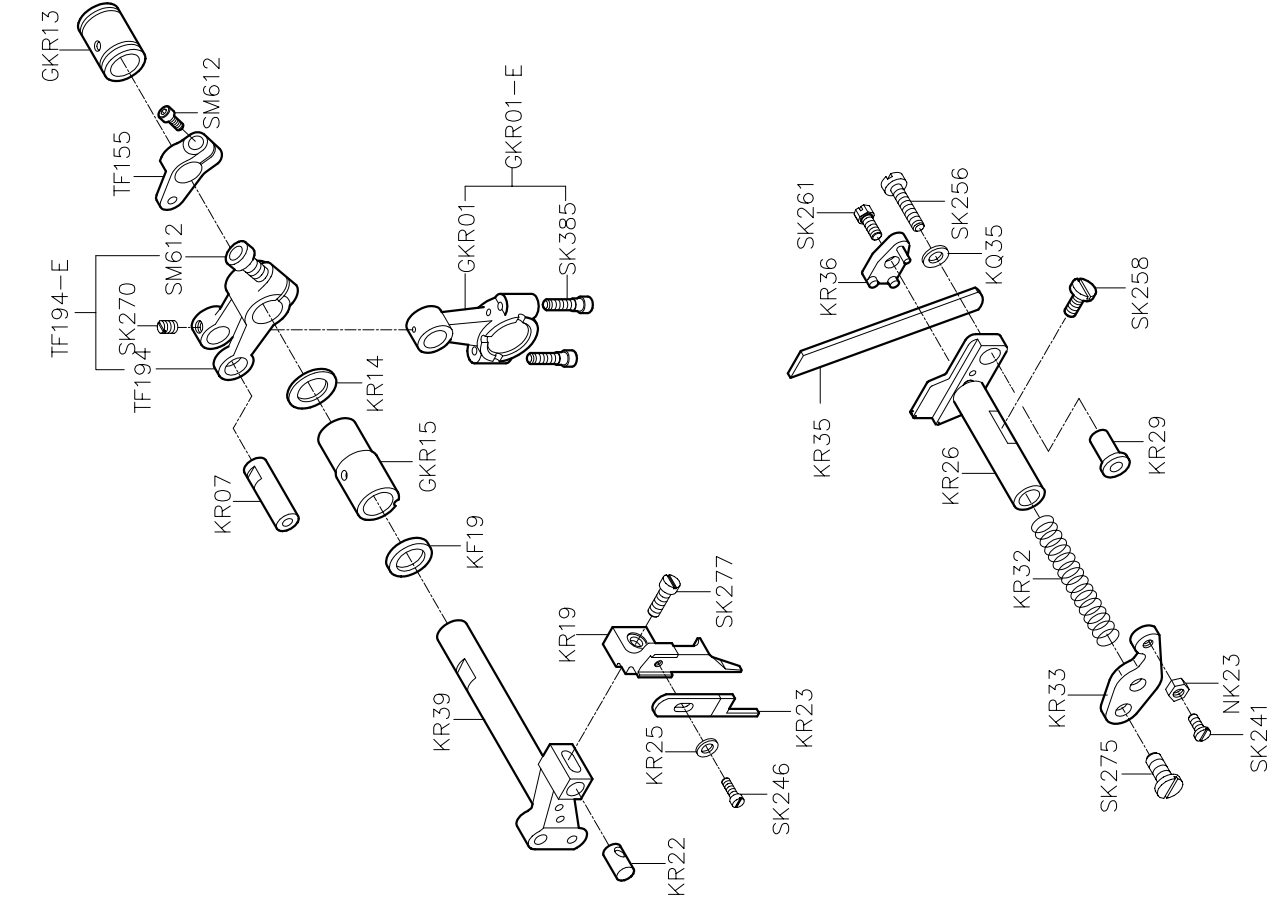
# PARTS LIST FOR KN GROUP



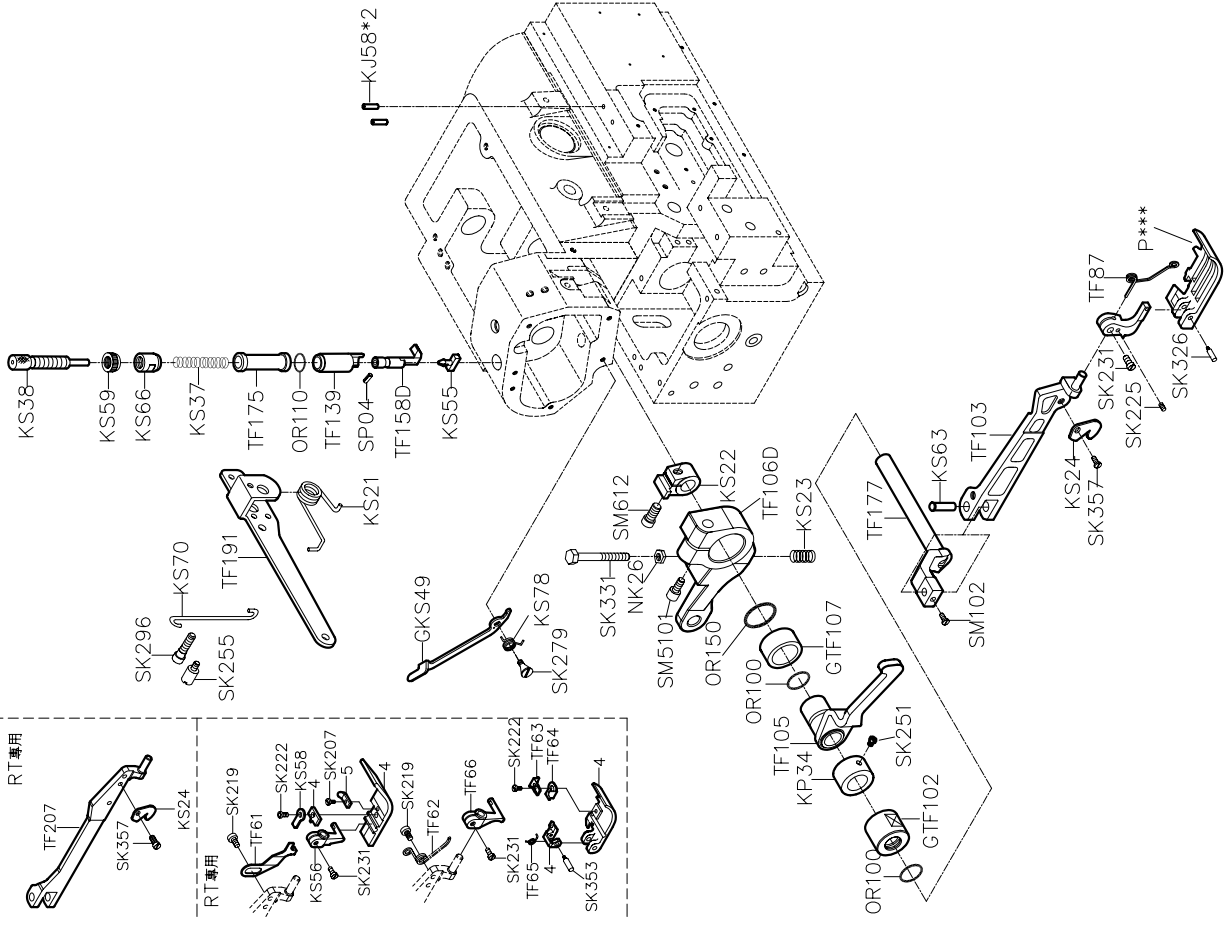


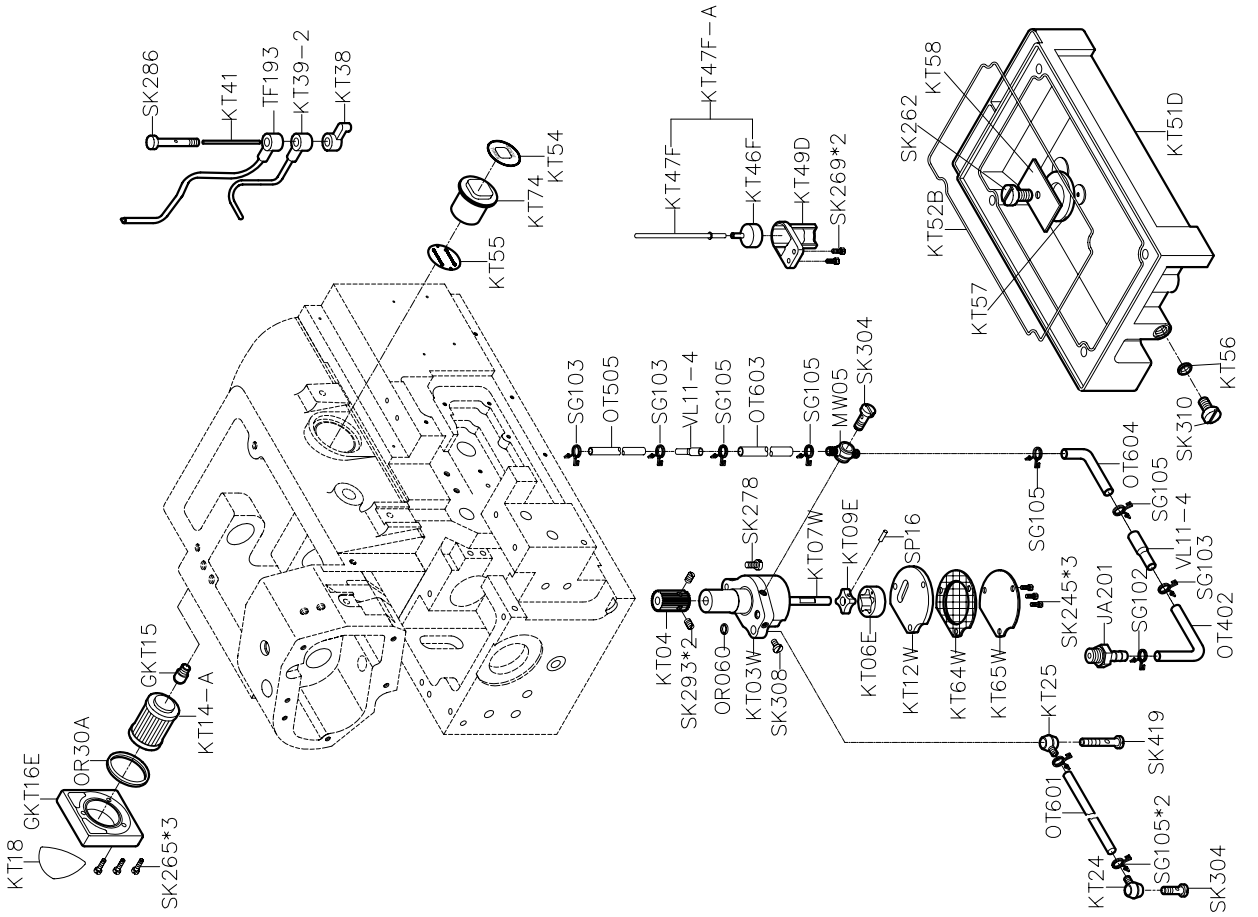


# PARTS LIST FOR KR GROUP



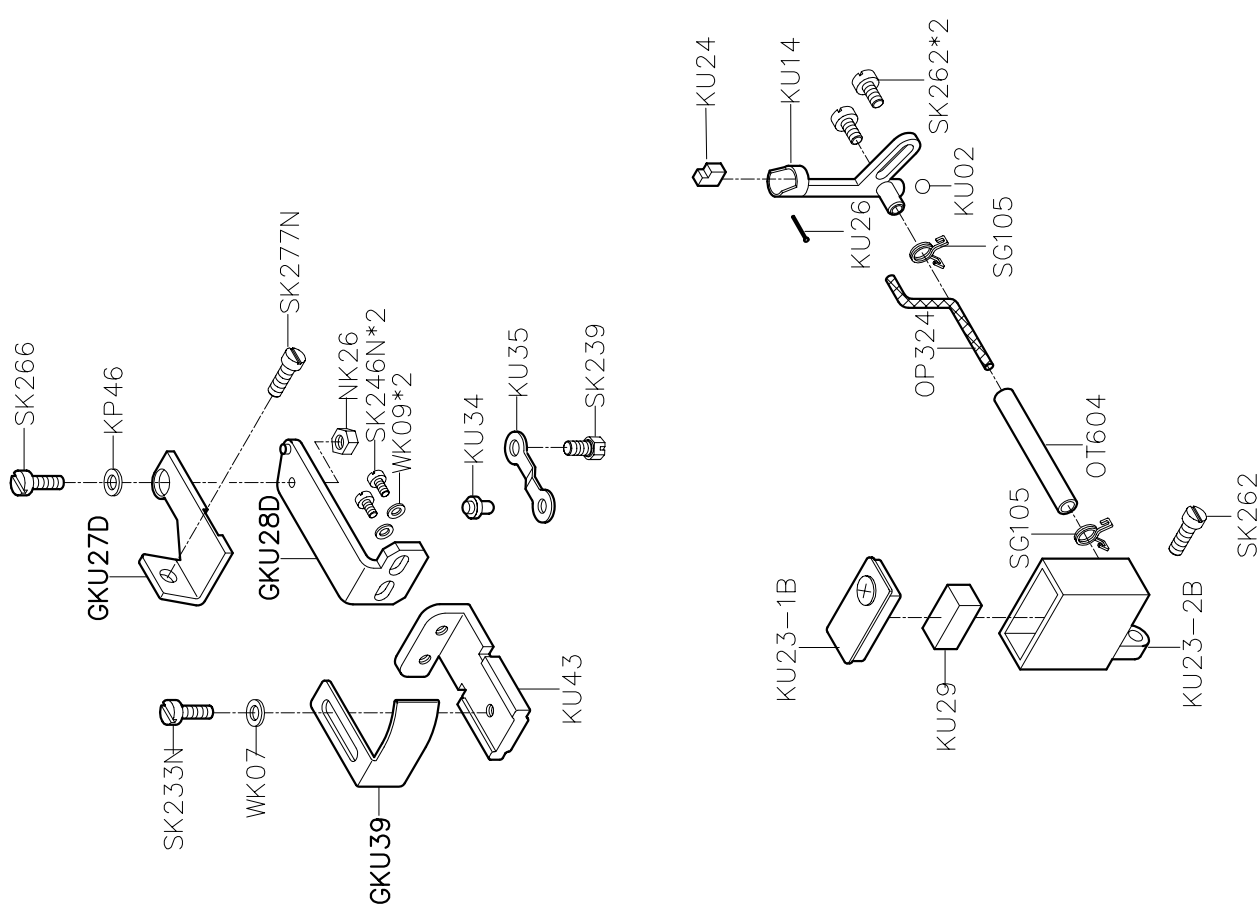
# PARTS LIST FOR KS GROUP





**PARTS LIST FOR KT GROUP**

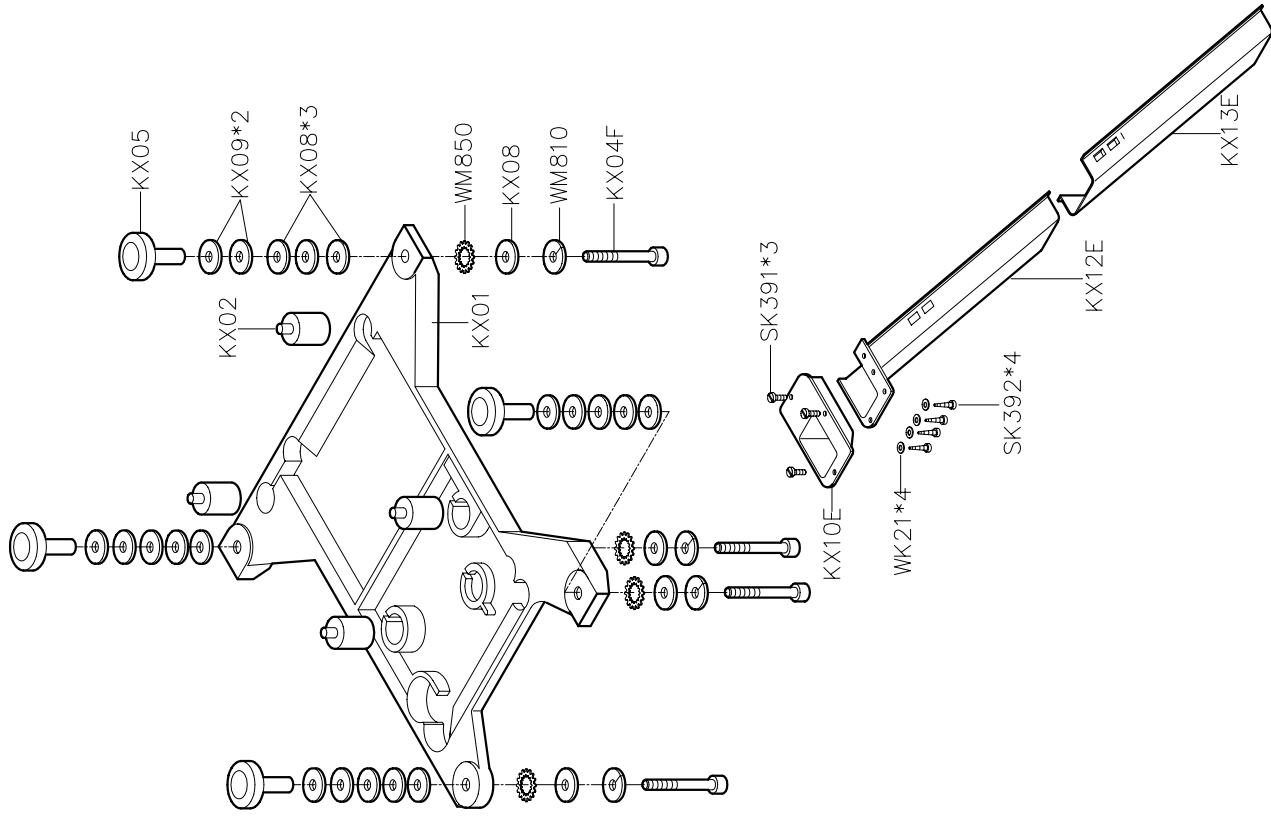
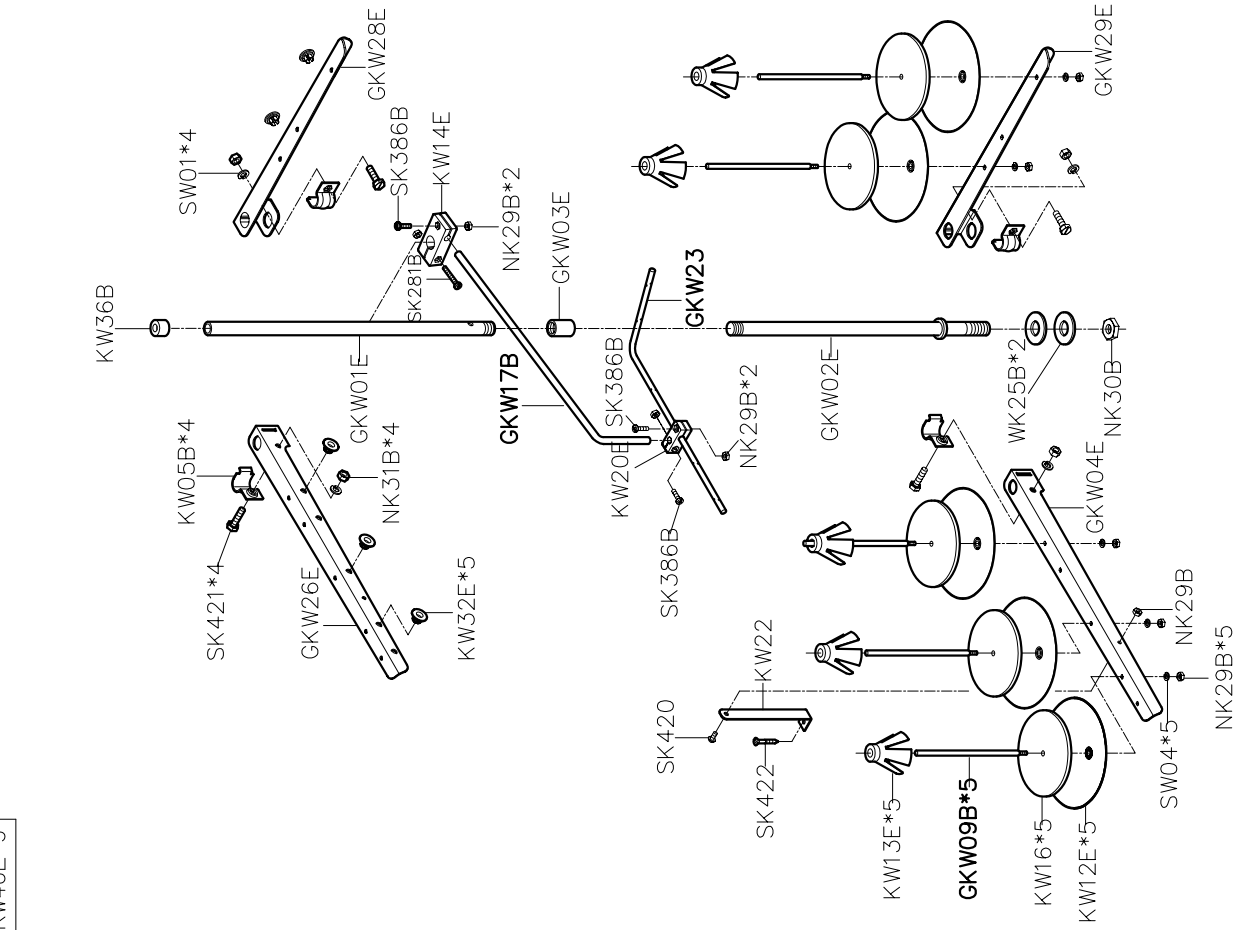
**PARTS LIST FOR KU GROUP**


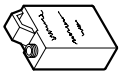
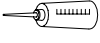
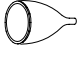

























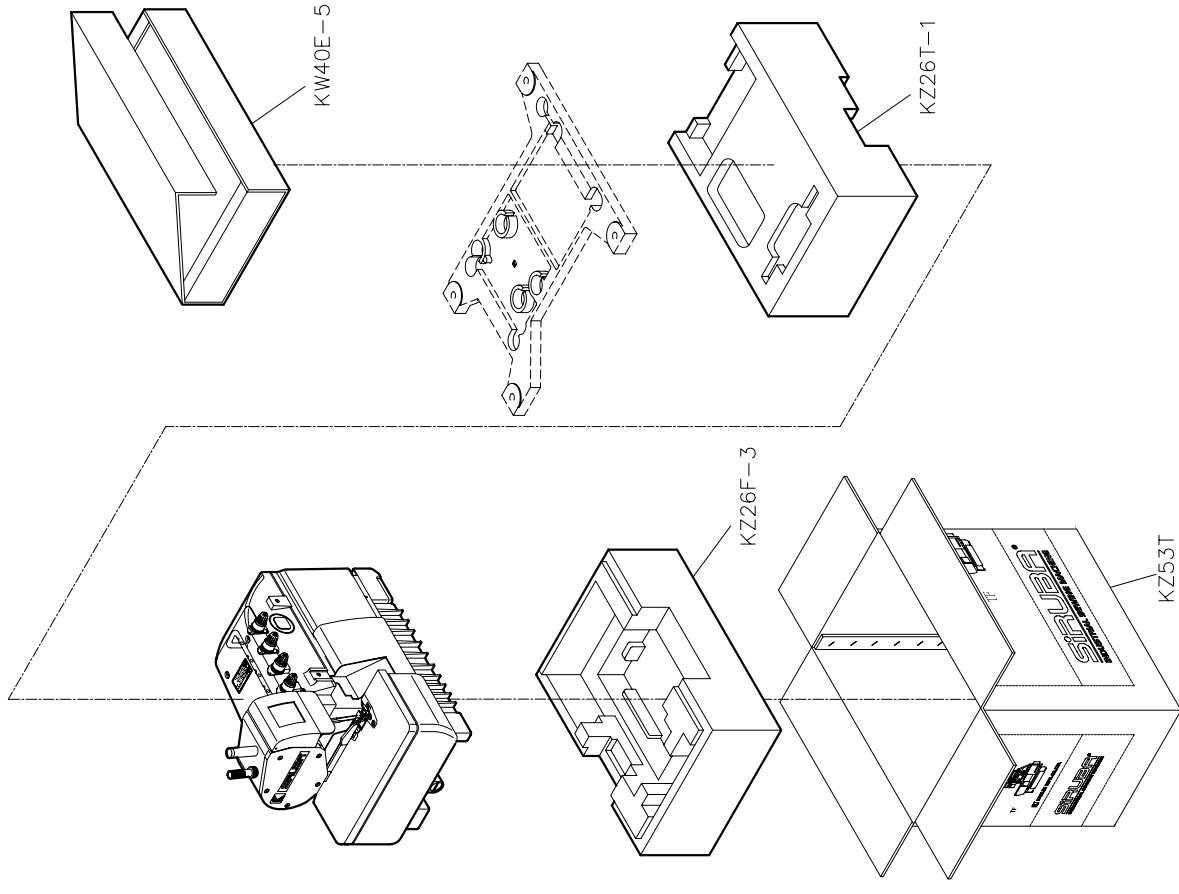
# PARTS LIST FOR KW GROUP

# PARTS LIST FOR KX GROUP

KW40E-5



GKY01 防護罩 	KY02-A 油罐 	KY03 油壺 	KY04 漏斗 	KY05 油壺 	KY07 開口板手 
KY08 開口板手 	KY09 開口板手 	KY10 六角板手 	KY11 六角板手 	KY12 六角板手 	KY14 內六角螺絲起子 
KY16 一字起子 	KY17 一字起子 	KY18 鑷子 	KY19 穿線器 	GKY20D 腳踏板 	KY21-A/MY21 鉤子/鍊條 
GKY26F 工具袋 	KR35 下刀片 	KT14-A 濾油器 	KZ03 乾燥劑 	針*5 針 	KZ08DFT/ KZ08DFT-1 使用說明書 
SK216 螺絲 	MY11 六角板手 	KY30 針板紙 			







# 700DFT

高林股份有限公司 KAULIN MFG. CO., LTD.

From the library of: Diamond Needle Corp